



Daikin Product Catalogue

Find the perfect solution for your home

Finding the right heating and cooling solution can make all the difference in your home comfort. If you're considering a Daikin heat pump, then you likely already know all the benefits that heat pumps can bring to your home—lower heating and cooling bills, improved efficiency, a smaller environmental footprint, and more consistent comfort year-round, even in unpredictable Atlantic Canadian weather.

Daikin offers a wide range of both ducted and ductless heat pumps to ensure that whatever your needs, we have a product that will help you live better and more comfortably in your home.

Every home is different and every family has different requirements, so we recommend that anyone interested in purchasing and installing a heat pump **contact an authorized Daikin dealer** so our product experts can ensure you have everything you need.





How To Measure Performance

SEER

“Seasonal Energy Efficiency Ratio” is used to measure the efficiency of a heat pump when it is in the cooling stage. The higher the SEER, the higher the efficiency rating. The minimum SEER Rating required for equipment in Canada is 13. SEER is calculated by taking the total cooling output of a heat pump in its air conditioning stage and dividing that by the total electricity input during the same period of time.

COP

The terms COP “coefficient of performance” and EER (energy efficiency ratio) describe the heating and cooling efficiency of air conditioners. They indicate the ratio of heating or cooling provided by a unit relative to the amount of electrical input required to generate it. Thus, if an air conditioner generates 5kW of heat from a 1kW electrical input, its COP is said to be 5.0. Similarly, if an air conditioner generates 5kW of cooling from a 1kW electrical input its EER is also said to be 5.0. The higher the COP and EER, the more energy efficient is the equipment.

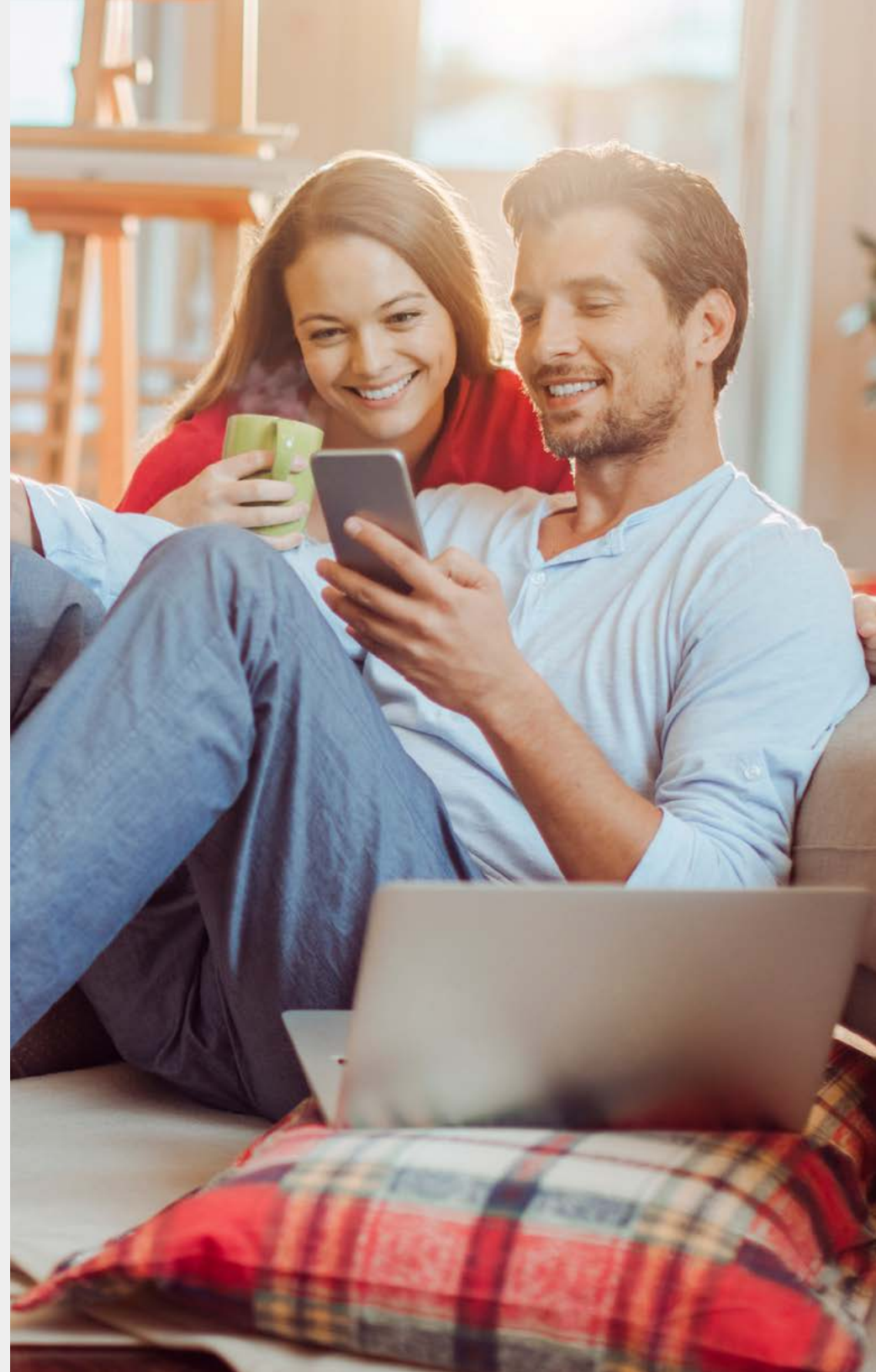
HSPF

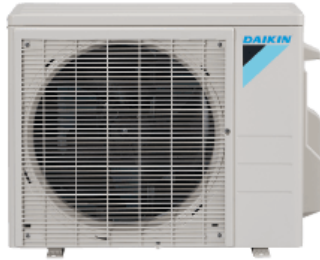
The “Heating Seasonal Performance Factor” is used to measure the heat pump’s efficiency when it is in heating mode, similar to how the SEER rating measures efficiency in cooling mode. The HSPF is important to consider for understanding the efficiency of your heat pump, especially in Atlantic Canada.

Ductless Heat Pumps

Single Zone

Daikin's single zone ductless heat pumps are ideal for the temperature control of a single room or for serving as a supplement to your existing heating/cooling system. They are small and unobtrusive indoors, and are paired with a quiet and compact outdoor unit. Single zone heat pumps are a great way to keep a small office, studio, or workshop toasty warm in the winter and comfortably cool in the summer.





15 Series Wall Mount

Daikin's 15 Series Wall Mount systems provide energy efficiency and comfort control with an affordable, cost-saving solution.

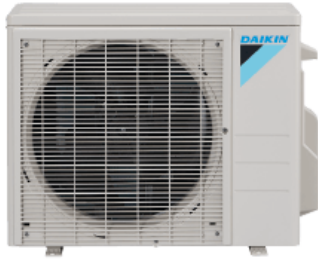
SEER LEVEL	HSPF	COP	COVERAGE
Up to 15	8.2	3.9	250–1,600 sq.ft.



17 Series Wall Mount

Daikin's 17 Series Wall Mount systems provide energy efficiency and comfort control with an affordable, cost-saving solution.

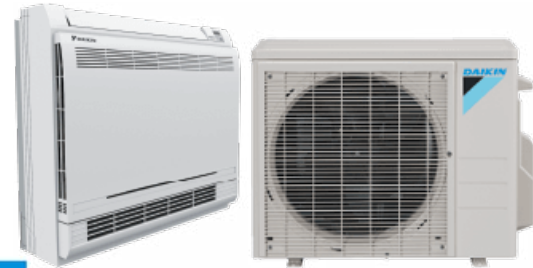
SEER LEVEL	HSPF	COP	COVERAGE
Up to 17	9	3.68	250–1,600 sq.ft.



19 Series Wall Mount

Ideal solution for spaces with primary living areas, rooms with poor air flow, renovations, basements, attics, garages, and home add-ons.

SEER LEVEL	HSPF	COP	COVERAGE
Up to 19	9	4.06	250–1,600 sq.ft.



Daikin AURORA™ –Floor Mount

Redesigned to withstand extreme weather conditions, with an ability to mount the indoor unit in various configurations.

SEER LEVEL	HSPF	COP	COVERAGE
Up to 20	11.7	4.1	250–1,600 sq.ft.



LV Series Wall Mount

Feature packed unit also receiving the ENERGY STAR® Most Efficient Mark in 2017.

SEER LEVEL	HSPF	COP	COVERAGE
Up to 24.5	12.5	4.5	250–1,600 sq.ft.



LV Series Slim Duct

An extremely unobtrusive, compact solution, where only the discharge and intake grills are visible.

SEER LEVEL	HSPF	COP	COVERAGE
Up to 15.5	10.3	3.5	250–900 sq.ft.



Daikin AURORA™ - Wall Mount

Redesigned to withstand extreme weather conditions, with a streamlined wall-mounted indoor unit.

SEER LEVEL	HSPF	COP	COVERAGE
Up to 15.5	12.5	4.2	250–900 sq.ft.



Quaternity

Highly efficient system provides a comfortable and refreshing indoor environment with advanced filtration and climate control.

SEER LEVEL	HSPF	COP	COVERAGE
Up to 26.1	11	4.5	250–1,200 sq.ft.



VISTA™ Ceiling Cassette

VISTA™ is a remarkable blend of iconic design and engineering excellence with an elegant white or a silver and white finish.

SEER LEVEL

Up to 20.9

HSPF

11.7

COP

4.58



NV Series Wall Mount

The new NV Series models provide an improved, modern designed indoor unit, enhanced overall performance as compared to previous models.

SEER LEVEL

Up to 17.5

HSPF

9.3

COP

2.92



FDMQ - Ducted Concealed Heat Pump

FDMQ makes a difference in any room. It offers concealed comfort and enhanced flexibility.

SEER LEVEL

Up to 20.2

HSPF

10.6

COP

4.1



VISTA™ Ceiling Cassette

VISTA™ is a remarkable blend of iconic design and engineering excellence with an elegant white or a silver and white finish.

SEER LEVEL

Up to 18.9

HSPF

11.7

COP

4.6

Ductless Heat Pumps

Multi-Zone

Temperature control systems are most efficient and effective when they allow users to independently control the temperature in different rooms of a home. With available wall-mounted, concealed slim-duct, ceiling cassette, and floor-mounted indoor options, Daikin heat pumps come in enough varieties to ensure that there is a solution to any home heating problem.





LV Series Wall Mount-Multi

Use this model as a multi application OR single depending on outdoor unit.

SEER LEVEL

Up to 18.9

HSPF

12.5

COP

4.6



FVXS

Floor mounted unit for optimal heating comfort thanks to dual airflow.

SEER LEVEL

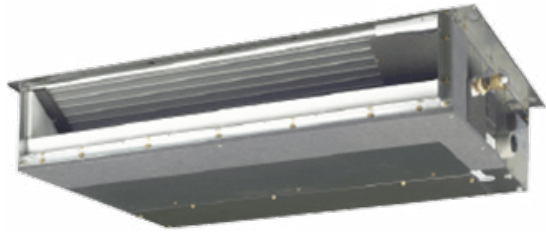
Up to 18.9

HSPF

11.7

COP

4.1



FDXS/CDXS

Compact concealed ceiling unit, with a height of only 7^{7/8}"

SEER LEVEL

Up to 18.9

HSPF

10.3

COP

3.3



FDMQ – Ducted Concealed Indoor Unit

FDMQ - Ducted Concealed Indoor Unit offers enhanced flexibility and concealed comfort for the entire home.

SEER LEVEL

Up to 20.2

HSPF

10.6

COP

4.1



Daikin EMURA™

Designed to perfectly balance technological capability and the beauty of aerodynamics.

SEER LEVEL

Up to 18.9

HSPF

Up to 12.5

COP

4.6





VRV IV-S Series

Daikin's VRV IV-S Series is available in smaller 3, 4 and new 5-ton capacities with a 208-230V, single phase power supply.

SEER LEVEL	HSPF	COP	COVERAGE
Up to 18	10.5	4.3	2-10 Zones



Multi-Zone Daikin AURORA™ (2 and 3 zones)

Daikin's Multi Zone Systems are ideal for multi-room applications desiring individual room comfort in a space-saving design.

SEER LEVEL	HSPF	COP	COVERAGE
Up to 17.9	12.5	4.6	2-3 Zones



8-Zone Multi-Split

Daikin's 8-Zone Multi-Split Systems can connect up to 8 indoor units to a single outdoor unit, providing enhanced comfort and energy savings.

SEER LEVEL	HSPF	COP	COVERAGE
Up to 18.8	16.5	3.0	4-8 Zones



Multi-Zone (2, 3, or 4 zones)

Daikin's Multi-Zone Systems can connect up to 4 indoor units to a single outdoor unit, providing enhanced comfort and energy savings.

SEER LEVEL	HSPF	COP	COVERAGE
Up to 18.9	12.5	4.6	2-4 Zones

Whole House

Heat pumps are an excellent choice for year-round heating and cooling of your home. In most cases, they are the most energy efficient, and therefore the most cost effective, option available. In addition to maintaining comfortable indoor temperature and humidity levels, whole house systems also offer the benefits of forced-air systems. You can rely on your heat pump to filter out airborne particles, resulting in cleaner, fresher indoor air.





VRV LIFE™

Daikin VRV LIFE™ systems bring inverter driven VRV technology to solve some of the age-old residential HVAC challenges.

SEER LEVEL

Up to 18

HSPF

Up to 10.5

COP

N/A



SkyAir Inverter Ducted

The Daikin SkyAir Inverter Ducted can be used to replace your existing system, utilizing existing ductwork, or in new construction where individual zone control is not desired.

SEER LEVEL

Up to 20

HSPF

12

COP

4



DZ20VC

The Daikin DZ20VC is an energy-efficient heat pump, driven by a Daikin brand variable-speed swing and scroll compressor.

SEER LEVEL

Up to 21

HSPF

10

COP

6.1



DZ18VC

The Daikin DZ18VC is a high-efficiency heat pump, powered by a variable-speed swing compressor, ensuring it can reach up to 19 SEER performance.

SEER LEVEL

Up to 19

HSPF

10

COP

6.03



DZ18TC

Daikin's DZ18TC heat pump is equipped with a high-efficiency two-stage Copeland® UltraTech scroll compressor.

SEER LEVEL

Up to 19

HSPF

9.5

COP

4.8



DZ16TC

The Daikin DZ16TC heat pump equipped with a two-stage scroll compressor offers efficient and cost-effective heating and cooling performance.

SEER LEVEL

Up to 16

HSPF

9.75

COP

4.74



DZ16SA

The Daikin DZ16SA heat pump offers efficient and economical heating and cooling performance and quiet operation.

SEER LEVEL

Up to 16

HSPF

9

COP

4.99



DZ14SA

The Daikin DZ14SA heat pump offers efficient and economical heating and cooling performance and quiet operation.

SEER LEVEL

Up to 15

HSPF

8.5

COP

4.72

Trust the Experts

Contact an authorized Daikin dealer near you today for more information about Daikin heat pumps. Our Daikin ComfortPro and 3D dealers are extremely knowledgeable and will be happy to visit your home to assess the space and layout and recommend the most efficient heat pump that will meet your comfort preferences.

Check out our Dealer Finder to find an authorized Daikin dealer near you!

